

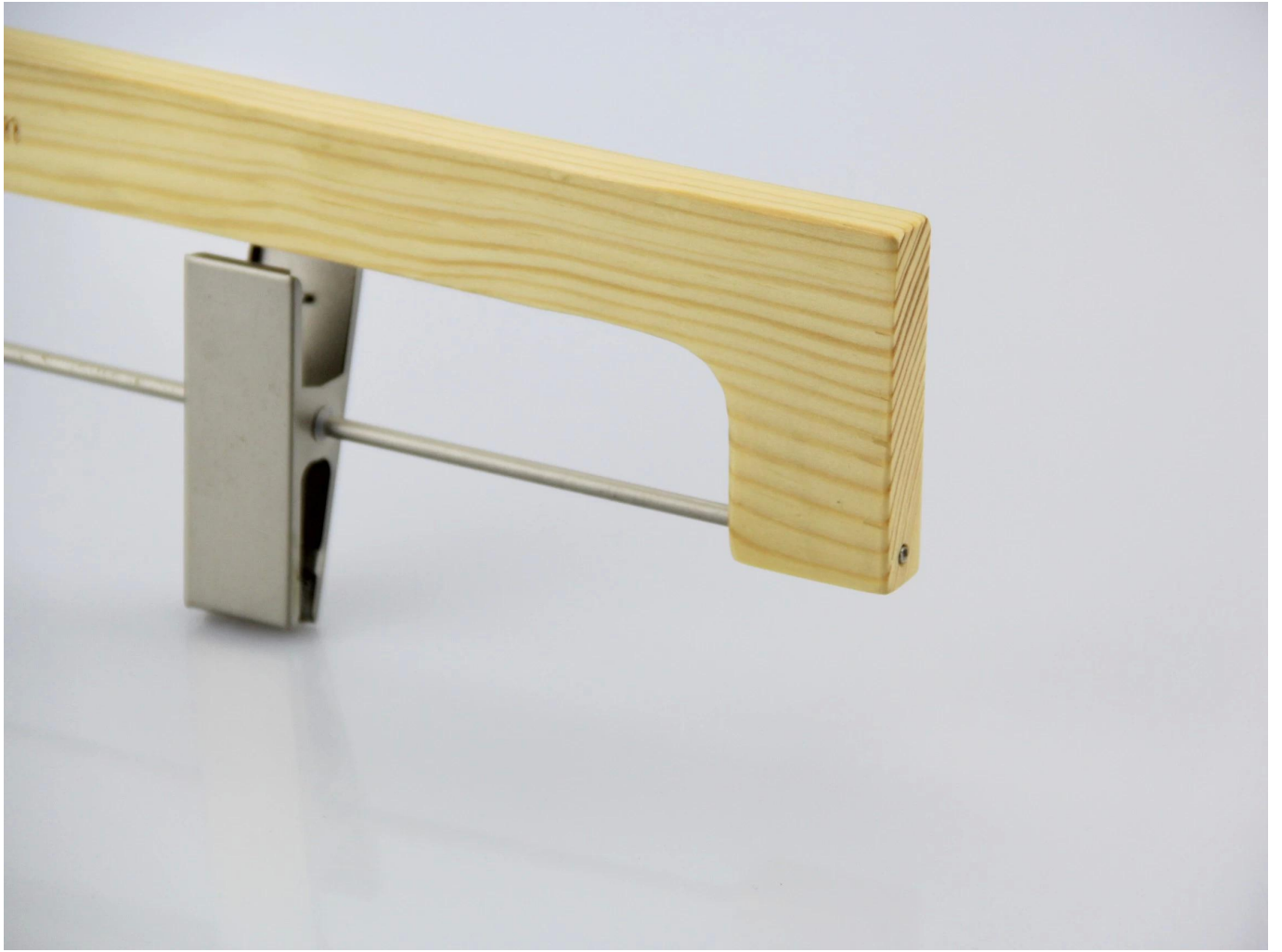
# PRODUCT DESCRIPTION

<b>Item No.</b>	MBW-004
<b>Material</b>	pine wood, Europe-imported <a href="#">beech wood</a> , birch wood, ash tree wood etc., also ok
<b>Size</b>	L36*T1.4cm
<b>Color</b>	Natural color
<b>Metal Hardware</b>	matte silver flat hook
<b>Logo</b>	laser engraved logo
<b>Surface Effect</b>	natural wood effect
<b>MOQ</b>	1000pcs per item
<b>Quality Level</b>	Luxury&Top end
<b>Usage</b>	for pants
<b>Product Capacity</b>	150000-300000 each month
<b>Delivery Time</b>	40-45 days
<b>Payment Terms</b>	T/T, PayPal, West Union, L/C etc.,
<b>Transportation</b>	By sea, by air, by express, and your shipping forwarder also is acceptable
<b>For Your Choice</b>	1.Customized hanger size and shape 2.any hanger color is ok, we can produce according to Pantone color you want 3.Different logo effect, laser engraved logo, print logo, metal plate logo etc., 4.many metal accessories for your option 5.package way can according to your instruction

# PRODUCT DETAILS









## FAQ

Q: Can you provide sample?

A: Yes, if we have stock or existing sample, the sample is free, but you need afford the shipping cost by yourself.

if need make new sample with your logo, then will charge sample cost, but sample cost can be refunded when order quantity reach our request.

Q: Can we put our name or logo in hangers?

A: Yes, that's no problem to put your name or logo in hangers.

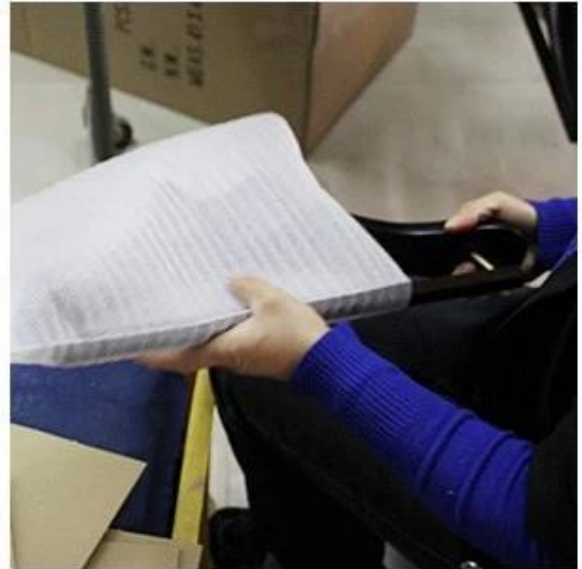
## **LUXURY&TOP END WOOD HANGER PRODUCTION**







**PE Foam Bag**



**1pc Hanger with 1pc Bag**



**K=K Carton with Shipping Mark**



**Place Layer by Layer**

- 1.Pack each wood hanger with suitable PE Foam Bag, well protected.
- 2.2pcs(top hanger and suit hanger) or 4pcs(pant hanger) each layer.
- 3.then in very strong cartons

**Contact Us**

If you have any request or question, pls **contact us**.

Welcome to visit our website [www.chinahangersupplier.com](http://www.chinahangersupplier.com)