

# PRODUCT DESCRIPTION

Item No.	MSW-007
Material	<a href="#">Europe-imported cedar wood</a>
Size	Top hanger L45.5*W5.0cm Pant hanger L36*T1.4cm
Color	Natural color
Metal Hardware	Nickeling round metal hook
Logo	No logo
Surface Effect	Brass cedar wood surface effect
MOQ	1000pcs each item
Quality Level	Luxury&Top end
Usage	For man suits, top cloth,shirt, jacket, clothes store
Product Capacity	150000-300000 each month
Delivery Time	45-60 days
Payment Terms	T/T, PayPal, West Union, and more as your requirement
Transportation	By sea, by air, by international express, and your shipping agent also is acceptable
For Your Choice	1.Customized size and shape meet your require 2.Adjustable color according to your need 3.Different logo effect offer to you for choice 4.Changeable metal accessories matched your hanger 5.Special packing way is acceptable

# PRODUCT DETAILS









## FAQ

Q: Do you offer free sample?

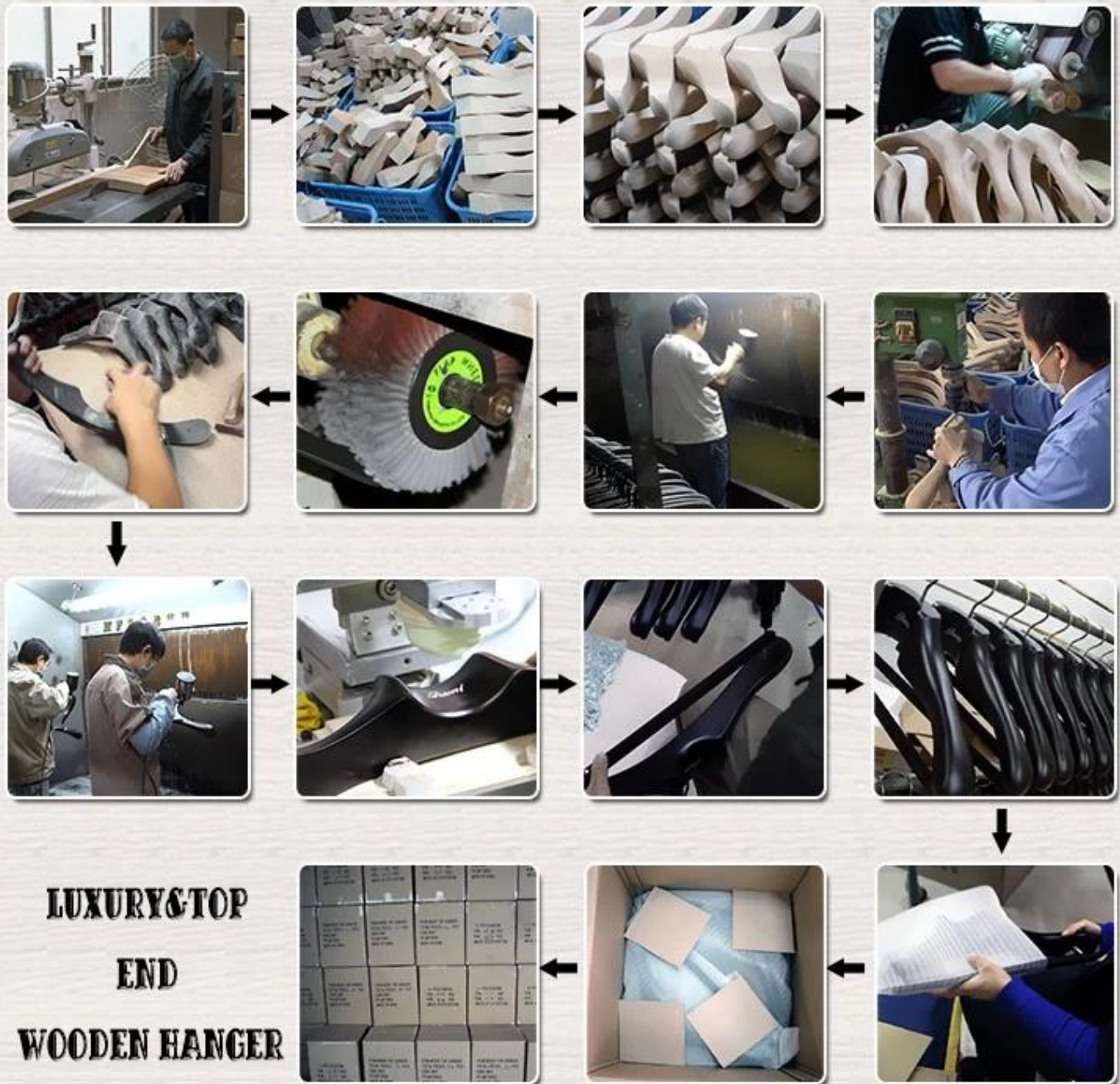
A: Of course, if the sample is common style, we provide free sample without shipment. If the sample you want is

uncommon style, you have to pay for making samples. Samples charge will refund after placed order

Q: If the products are broken during the transportation, how can I do?

A: You can show us the broken products by photos. If the reason is our manufacturing mistakes, we will resend you products with the same quantity of the broken one.

## **LUXURY&TOP END WOOD HANGER PRODUCTION**



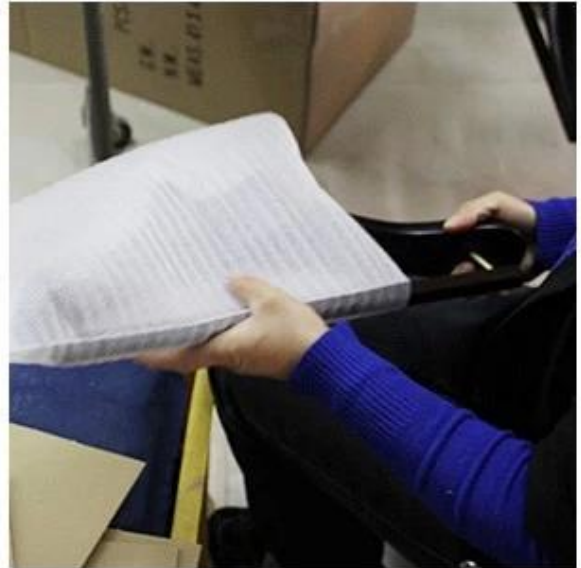
Our Luxury&Top end wood hanger are handmade, with the wood material you want, do the shape you need, very suitable for your clothes. The hanger size, color, logo, and metal design also changeable, hanger details are from your choice. In hanger production, the paint is very important. Before paint hanger, need adjust the color first, so that it can be the color you want. Our production department use Taiwan famous brand paint-Taiho Paint for the luxury&top end wood hanger, our workers paint each hanger one by one, for 2 times undercoating and 2 times topcoating, the hanger surface is very smooth and smell.



## **HANGER PACKAGE**



**PE Foam Bag**



**1pc Hanger with 1pc Bag**



**K=K Carton with Shipping Mark**



**Place Layer by Layer**

- 1.Pack each wood hanger with suitable size PE Foam Bag.
- 2.Place 2pcs(top hanger and suit hanger) or 4pcs(pant hanger) each layer.
- 3.Place hanger layer by layer in the custom K=K carton
- 4.Print or Write shipping mark outside the carton, for distinguishing the goods in transit usefully.

## Contact Us

If you have any need and question, pls **contact us**.

Your any counsel will be patience to answer.

Welcome to visit our website [www.chinahangersupplier.com](http://www.chinahangersupplier.com)