

PRODUCT DESCRIPTION

| | |
|-------------------------|--|
| Item No. | WSW-011 |
| Material | Lotus wood, Europe imported beech wood, Birch wood, ashtree wood etc, also ok |
| Size | L41cm * T1.5cm for top hanger and L38.5cm for pant hanger |
| Color | Natural |
| Metal Hardware | Matte silver round hook |
| Logo | print logo laser engraved logo also ok |
| Surface Effect | natural smooth polished surface |
| MOQ | 3000pcs/item |
| Quality level | good quality |
| Use | for women clothes |
| Product capacity | 150,000-300,000 per month |
| Delivery time | 35-45 days |
| Payment terms | PayPal, West Union, T/T, L/C etc., |
| Transport | By sea, by air, by express, and your shipping forwarder is also acceptable |
| For your choice | 1. custom hanger size and shape 2. any hanger color is ok, we can produce according to Pantone color you want 3. various logo effect, laser engraved logo, print logo, metal logo etc., 4. many metal accessories for your option 5. package way according to your instruction |

PRODUCT DETAIL







FAQ

Q: can you provide hanger sample?

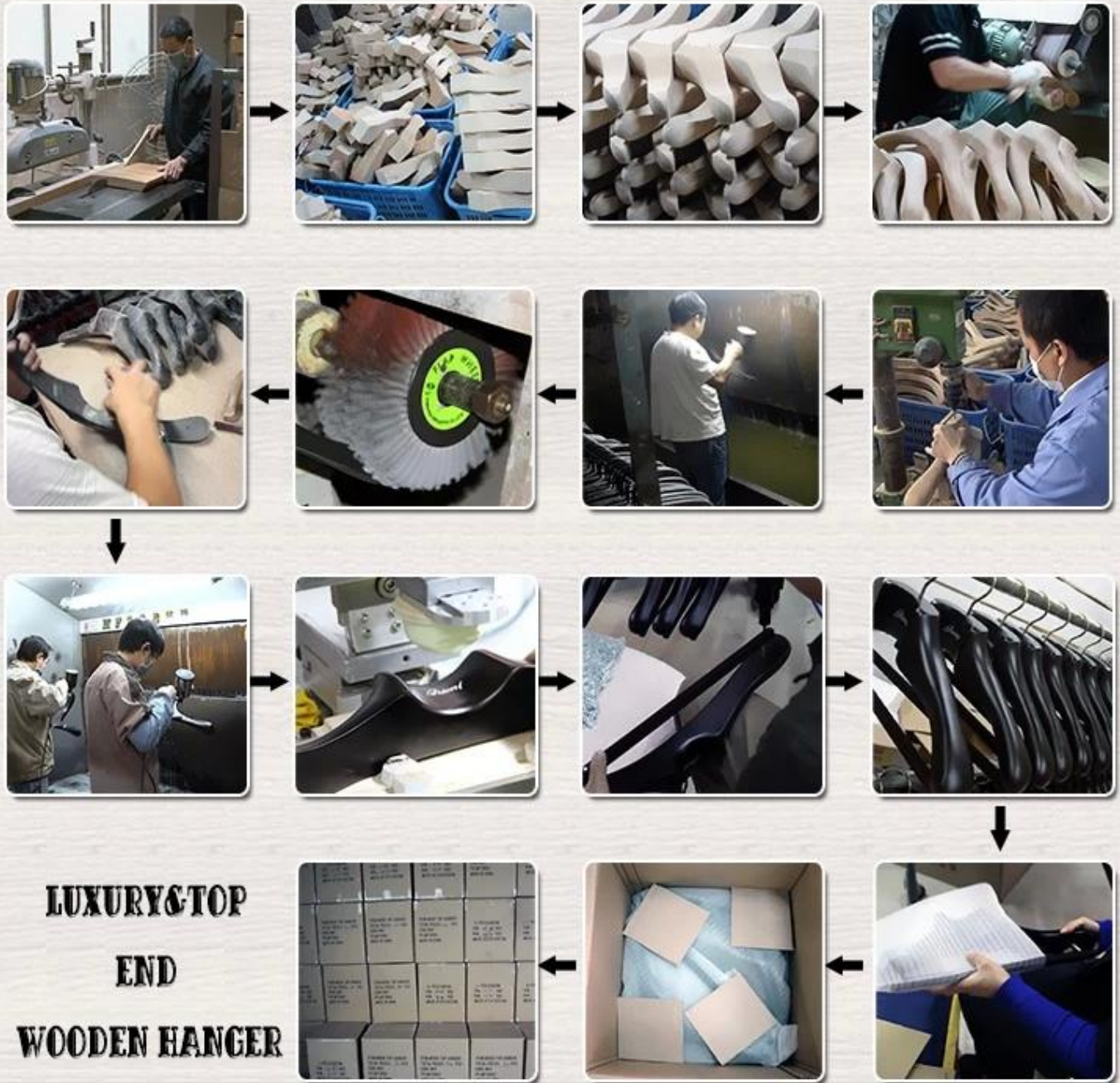
A: Yes, if we stock or existing sample, the sample is free, but you have to afford the shipping cost by yourself.

If need new shanger ample with your logo, then need charge sample costs, but sample cost can be refunded when reach request order quantity.

Q: can we put our name or logo in hangers?

A: Yes, that is no problem to put your name or logo in hangers.

LUXURY & TOP WOODEN HANGER-PRODUCTION



Our luxury & Top end [wood hanger](#) produced by handcraft, according to your request about hanger size, shape, colour, metal accessory and logo etc., If you have a design, we can produce the desired design in object. We use Taiwan famous brand paint-Taiho paint for the luxury & top wooden [hanger](#), our employees painting each hanger one by one manually painting, four times painting surface, 2 times undercoating and 2 times surface coating, very luxury and eco-friendly.

PENDANT PACKAGE



PE Foam Bag



1pc Hanger with 1pc Bag



K=K Carton with Shipping Mark



Place Layer by Layer

1. every wooden hanger with suitable PE Foam bag, well protected.
2. 2 pcs (upper hanger and suit hanger) or 4pcs (pant hanger) each layer.
3. put in very strong cartons

Contact us

If you have any request or inquiry, pls **Contact us**.

Contact Person: Freda

Email address: yt002@ythanger.com

Skype: fredalee51

Tel: 0755 28750512

Welcome to our website www.chinahangersupplier.com