

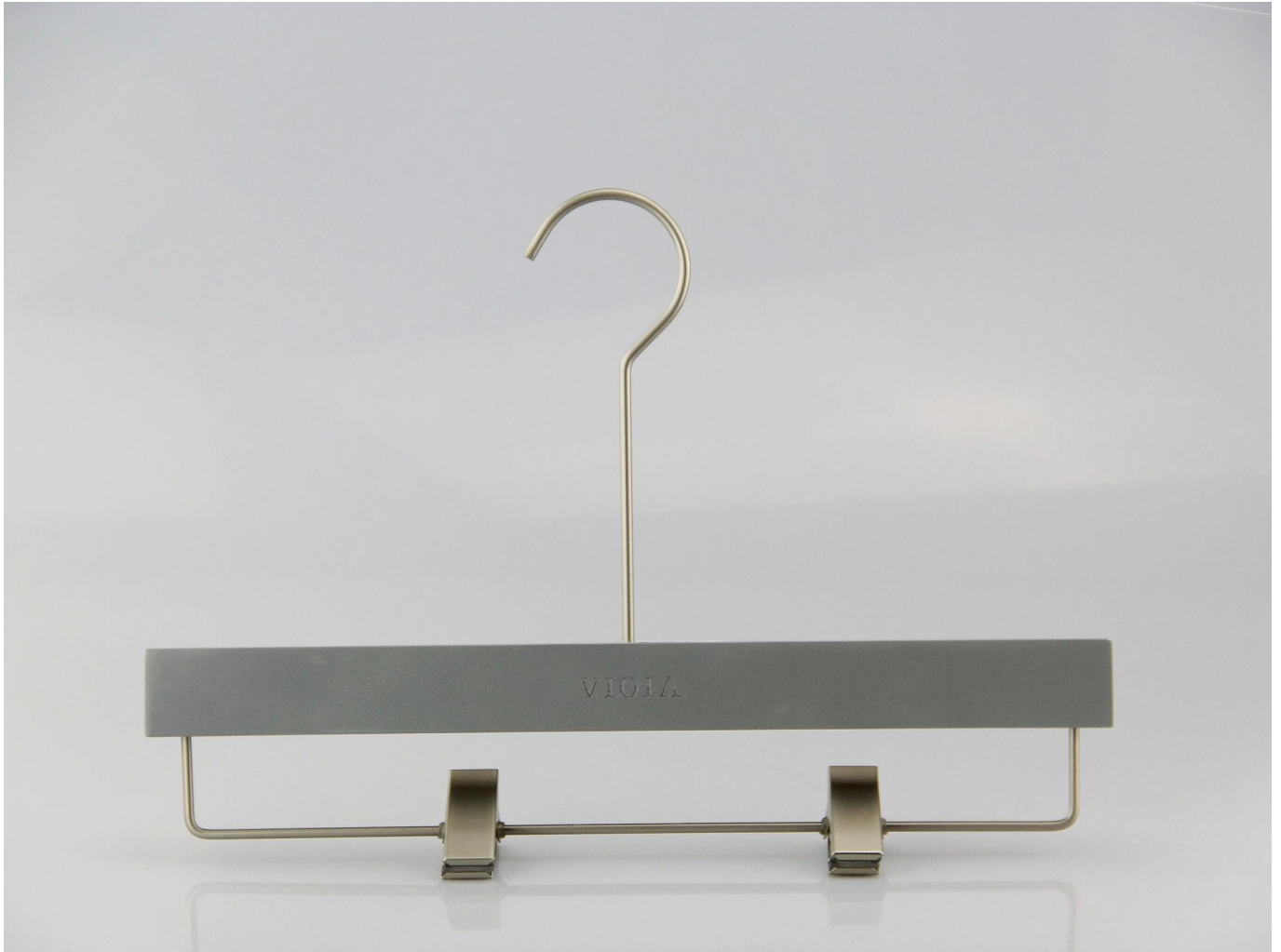
# PRODUCT DESCRIPTION

Item No.	WSW-012
Material	Lotus wood, Europe imported beech wood, Birch wood, ashtrree wood etc, also ok
Size	L39.5cm * W4.0cm for top hanger and L33cm for pant hanger
Color	Gray
Metal Hardware	Matte silver round hook
Logo	laser engraved logo, printing logo, metal plate logo etc., also ok
Surface Effect	4 times painting surface, very smooth and luxury
MOQ	1000pcs/item
Quality level	top grade quality
Use	for women clothes
Product capacity	150,000-300,000 per month
Delivery time	35-45 days
Payment terms	PayPal, West Union, T/T, L/C etc.,
Transport	By sea, by air, by express, and your shipping forwarder is also acceptable
For your choice	1. custom hanger size and shape 2. any hanger color is ok, we can produce according to Pantone color you want 3. various logo effect, laser engraved logo, print logo, metal logo etc., 4. many metal accessories for your option 5. package way according to your instruction

# PRODUCT DETAIL







## FAQ

Q: can you provide hanger sample?

A: Yes, if we stock or existing sample, the sample is free, but you have to afford the shipping cost by yourself.

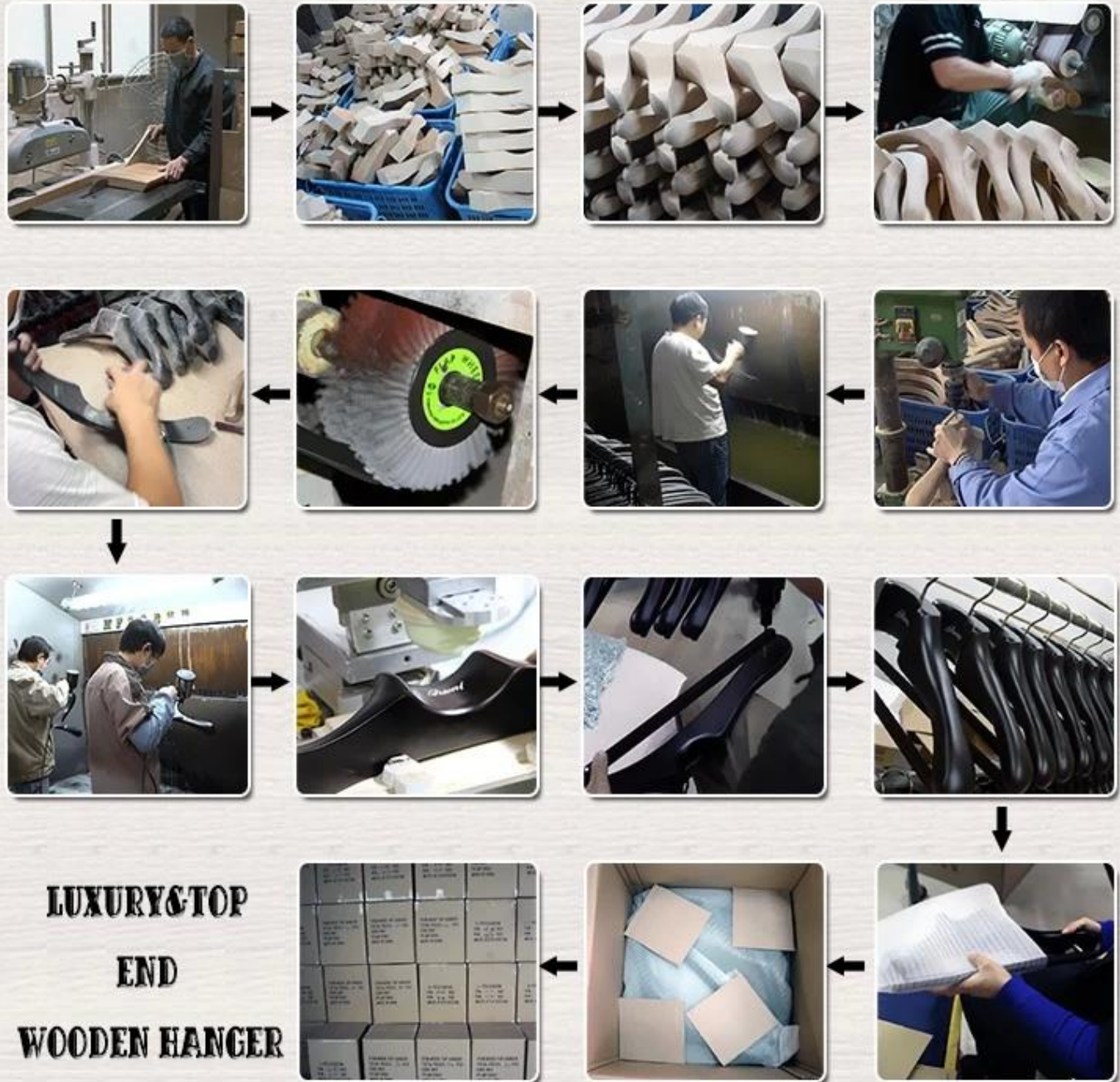
If need new shanger ample with your logo, then need charge sample cost, but sample cost can be refunded when reach requested order quantity.

Q: can we put our name or logo in hangers?

A: Yes, that is no problem to put your name or logo in hangers.

## **LUXURY & TOP WOODEN HANGER-PRODUCTION**





Our luxury & Top end [wood hanger](#) produced by handicraft, according to your request about hanger size, shape, colour, metal accessory and logo etc., If you have a design, we can produce the desired design in object. We use Taiwan famous brand paint-Taiho paint for the luxury & top wooden [hanger](#), our employees painting each hanger one by one manually painting, four times painting surface, 2 times undercoating and 2 times surface coating, very luxury and eco-friendly.

## **PENDANT PACKAGE**



**PE Foam Bag**



**1pc Hanger with 1pc Bag**



**K=K Carton with Shipping Mark**



**Place Layer by Layer**



1. every wooden hanger with suitable PE Foam bag, well protected.
2. 2 pcs (upper hanger and suit hanger) or 4pcs (pant hanger) each layer.
3. put in very strong cartons

**Contact us**

If you have any request or inquiry, pls **Contact us.**

Contact Person: Freda

Email address: [yt002@ythanger.com](mailto:yt002@ythanger.com)

Skype: fredalee51

Tel: 0755 28750512

Welcome to our website [www.chinahangersupplier.com](http://www.chinahangersupplier.com)